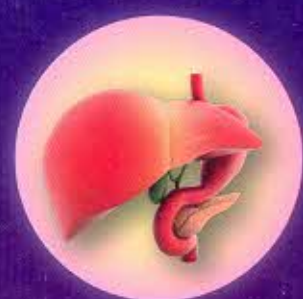
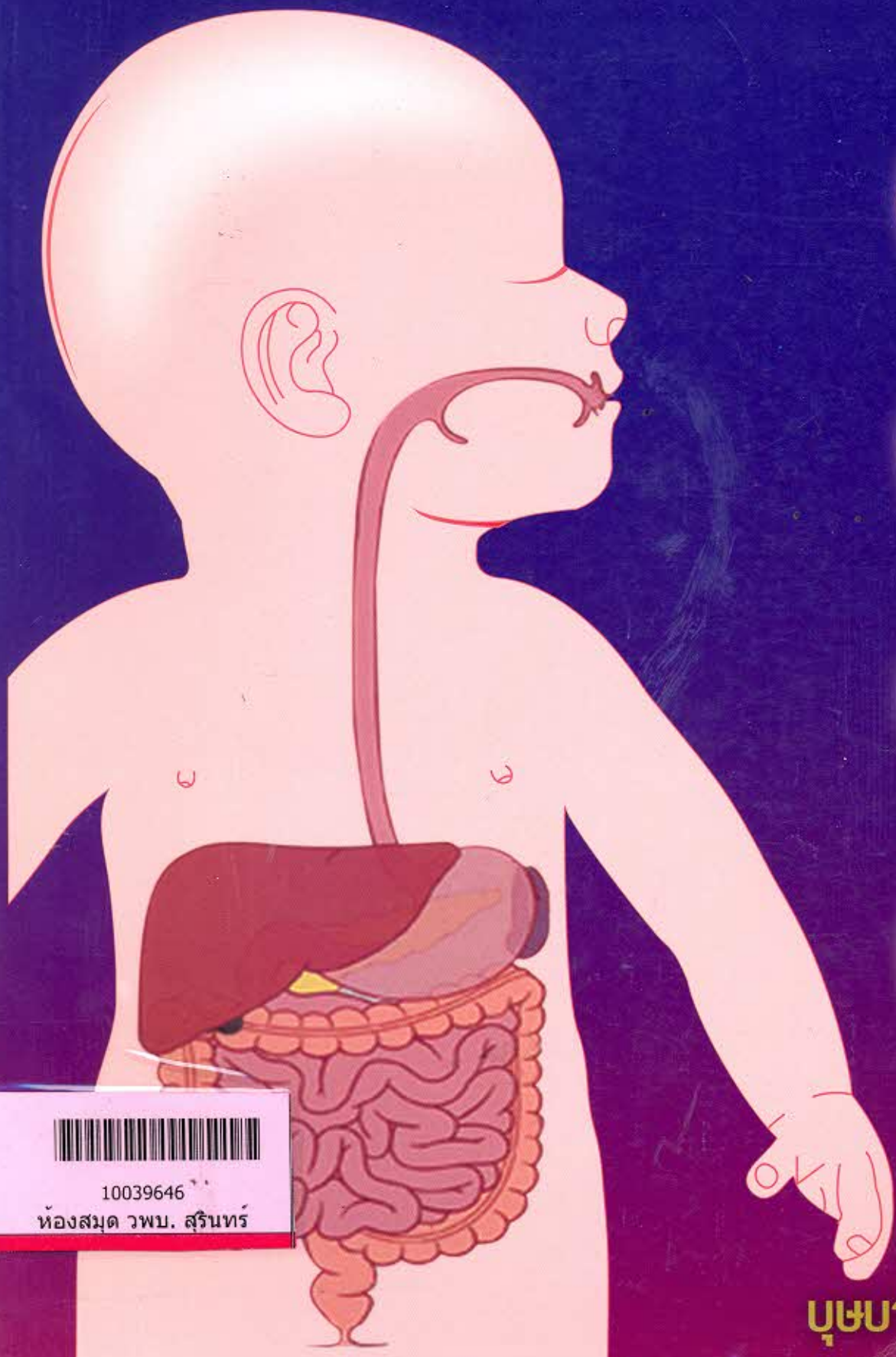


ATLAS OF PEDIATRIC GASTROENTEROLOGY



10039646

ห้องสมุด วพบ. สุรินทร์

บรรณาธิการ
บุษบา วิวัฒน์เวคิน

สารบัญ

SESSION I: การวินิจฉัยเมื่อเรทเห็น Spot Diagnosis

1.1 Oral cavity	10
1.2 Esophagus	24
1.3 Stomach	40
1.4 Small intestine	56
1.5 Large intestine	78
1.6 Anus	92
1.7 Pancreas	104
1.8 Liver, Gall bladder	110

SESSION II: Special conditions

2.1 Chylous ascites	126
2.2 Cow's milk protein allergy (CMPA)	128
2.3 Cystic fibrosis (CF)	138
2.4 Eosinophilic Esophagitis	140
2.5 Foreign Bodies	142
2.6 Henoch Schoenlein purpura	150
2.7 Intestinal lymphangiectasia	154
2.8 Short Bowel syndrome	156
2.9 Small Intestinal Bacterial Overgrowth (SIBO)	160

SESSION III: Diagnostic procedures

3.1 Abdominal paracentesis	166
3.2 Anorectal Manometry (ARM)	168
3.3 Apt test	169
3.4 Capsule intestinal biopsy	170
3.5 Endoscopy	171
3.5.1 Proctoscopy	171
3.5.2 Sigmoidoscopy	172
3.5.3 Esophago-gastro-duodenoscopy (EGD)	172
3.5.4 Double balloon enteroscopy	174
3.5.5 Colonoscopy	174
3.5.6 Video capsule endoscopy	176
3.6 Esophageal Manometry	178
3.7 Hydrogen breath test (HBT)	179
3.8 Liver Biopsy	180
3.9 pH monitoring	182
3.9.1 24-pH monitor	182
3.9.2 Multichannel Intraluminal Impedance (MII)	183
3.9.3 Oro-pharyngeal pH monitoring	183
3.10 Stool diagnosis	184
3.11 Urea Breath test (UBT)	190
3.12 Colonic transit time	190
3.13 Liver Elastography (Fibroscan®)	192

SESSION IV: Therapeutic procedures

4.1 Foreign body retrieval	194
4.2 GI bleeding	195
4.2.1 Senkstaken –Blakemore intubation (SB)	195
4.2.2 Esophageal variceal banding ligation (EVBL)	196
4.2.3 Esophageal variceal Sclerotherapy (EST)	197
4.2.4 Glue injection	198
4.2.5 Hemoclip	199
4.2.6 Argon Plasma Cauterization (APC)	200
4.2.7 Heater Probe	201
4.3 Enteral feeding	202
4.3.1 Nasoenteral feeding	202
4.3.2 Percutaneous Endoscopic Gastrostomy (PEG)	202
4.4 Polypectomy	204
4.5 Esophageal dilatation	205